

REVDECOR
RAIATEX | DECMUR



CATÁLOGO DE CORES

REVESTIMENTO ACRÍLICO DECORATIVO

- ACABAMENTO DECORATIVO
- RESISTENTE AOS UV
- HIDRORREPELENTE
- RESISTENTE A FUNGOS



REVDECOR Raiatex | Decmur

Revestimento decorativo, à base de emulsões acrílicas, partículas de mármore com granulometria selecionada e pigmentos com elevada resistência à luz solar. Disponível nos acabamentos raiado e areado, nas espessuras fina (0,8-1,0mm) e média (1,3-1,5mm).

Características

- Excelente aplicabilidade;
- Boa resistência ao envelhecimento natural;
- Boa retenção de cor;
- Baixa absorção de água;
- Elevada permeabilidade ao vapor de água.

Utilização

Destinado à proteção e decoração de fachadas, sobre betão, reboco tradicional, argamassas, etc...

Revestimento especialmente recomendado como acabamento em isolamentos térmicos pelo exterior.

Preparação da Superfície

As superfícies a revestir devem estar bem limpas, secas, desengorduradas, isentas de poeiras, areias soltas ou tintas mal aderentes. No caso de superfícies friáveis e pulverulentas aplicar uma primeira demão de primário **DISSOLFIX** (ref.10.26) ou **DISSOLITE AQUOSO** (ref.ª10.21). Para uma boa uniformização de cor e suporte, aplicar uma demão de **PRIMÁRIO GRD** (ref.ª10.18) à cor do acabamento.

Condições de Aplicação

Temperatura Ambiente | 10-30 °C

Humidade | Inferior a 80%

Evitar a aplicação em horas de elevada exposição solar.

Não aplicar em superfícies com inclinação superior a 35°.

Evitar a utilização de lotes (produto ou cor) diferentes na mesma fachada.



Rendimento |

Espessura fina: 1,5-2 Kg / m²

Espessura média: 2-3 Kg / m²

Diluição | Não diluir

Núm. de Demãos | 1

Secagem | 8-12h

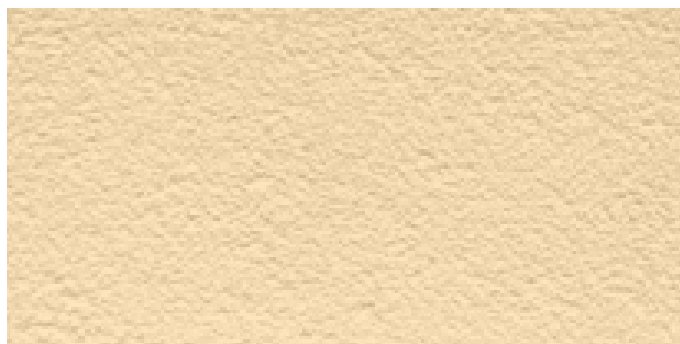
Aplicação | Talocha

RAIATEX 1 | Espessura fina, efeito raiado | ref.01.2401



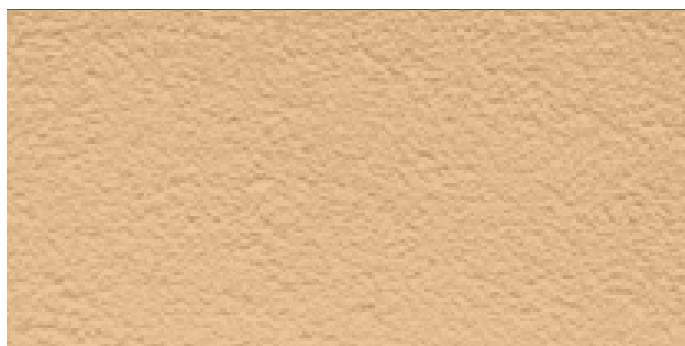
A R191 Washington

DECMUR 1 | Espessura fina, efeito areado | ref.01.6401



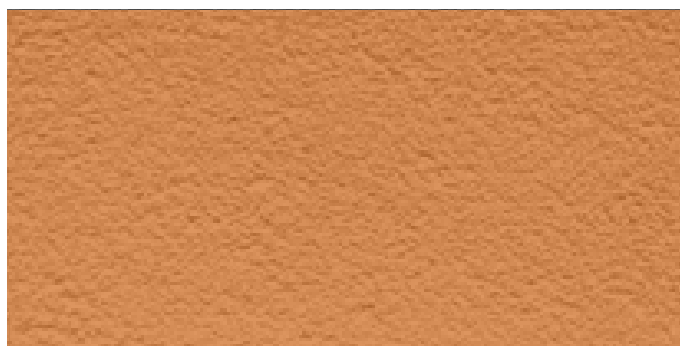
A R193 Seul

RAIATEX 1,5 | Espessura média, efeito raiado | ref.01.2415

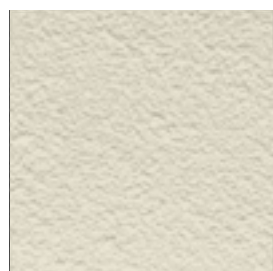


A R194 Dakar

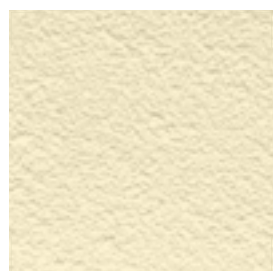
DECMUR 1,5 | Espessura média, efeito areado | ref.01.6415



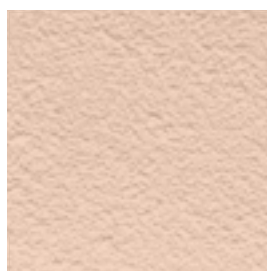
A R185 Roma



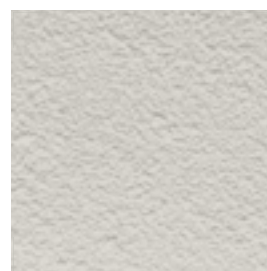
A R270 Copenhaga



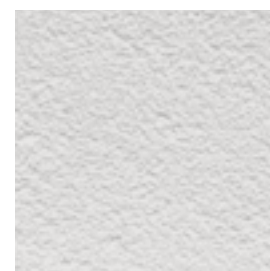
A R172 Bruxelas



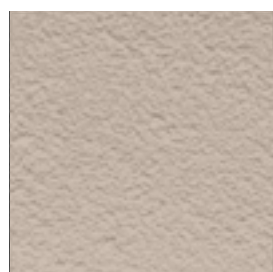
A R195 Sófia



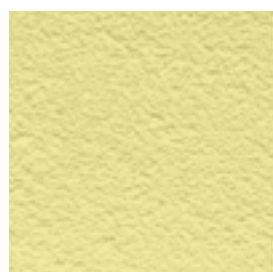
A R168 Pequim



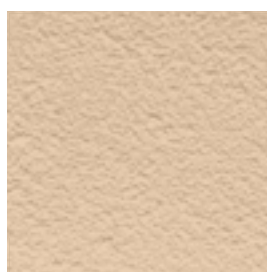
A R167 Viena



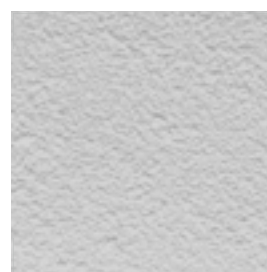
A R196 Tóquio



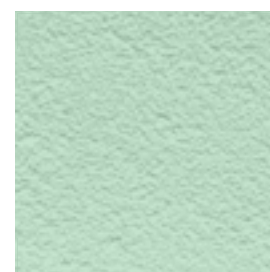
A R170 Brasília



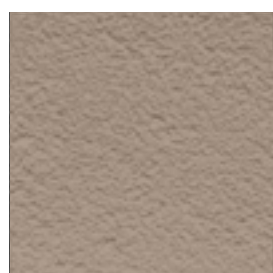
A R169 Madrid



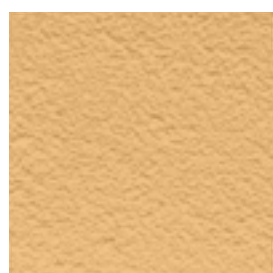
A R187 Londres



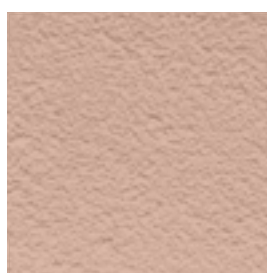
A R188 Amesterdão



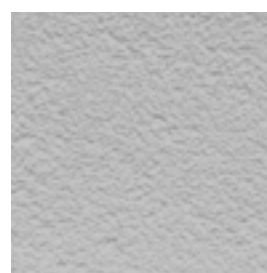
A R179 Berlim



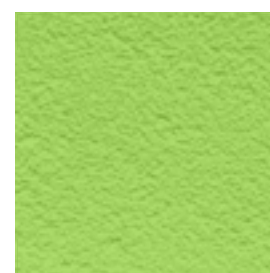
A R180 Lisboa



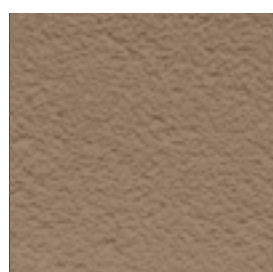
A R171 Atenas



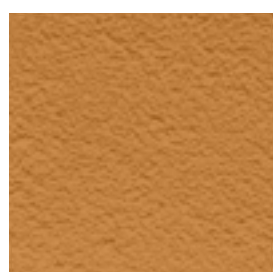
A R173 Dublin



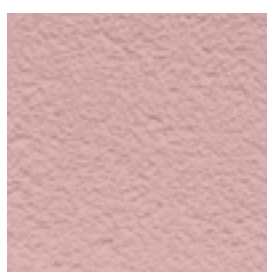
B R177 Buenos Aires



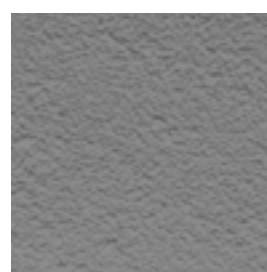
A R189 Maputo



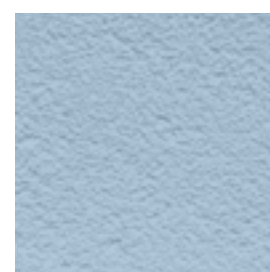
C R190 Bogotá



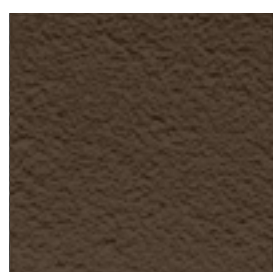
A R271 Ancara



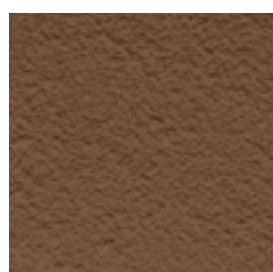
A R178 Oslo



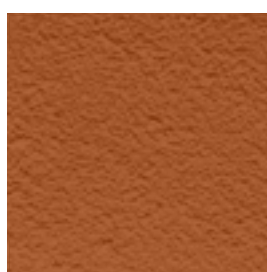
A R192 Nuuk



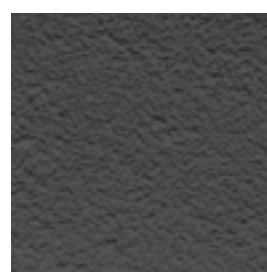
C R272 Riade



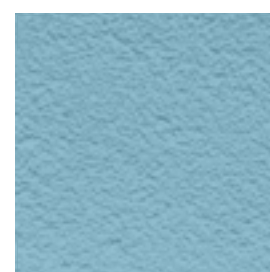
B R184 Havana



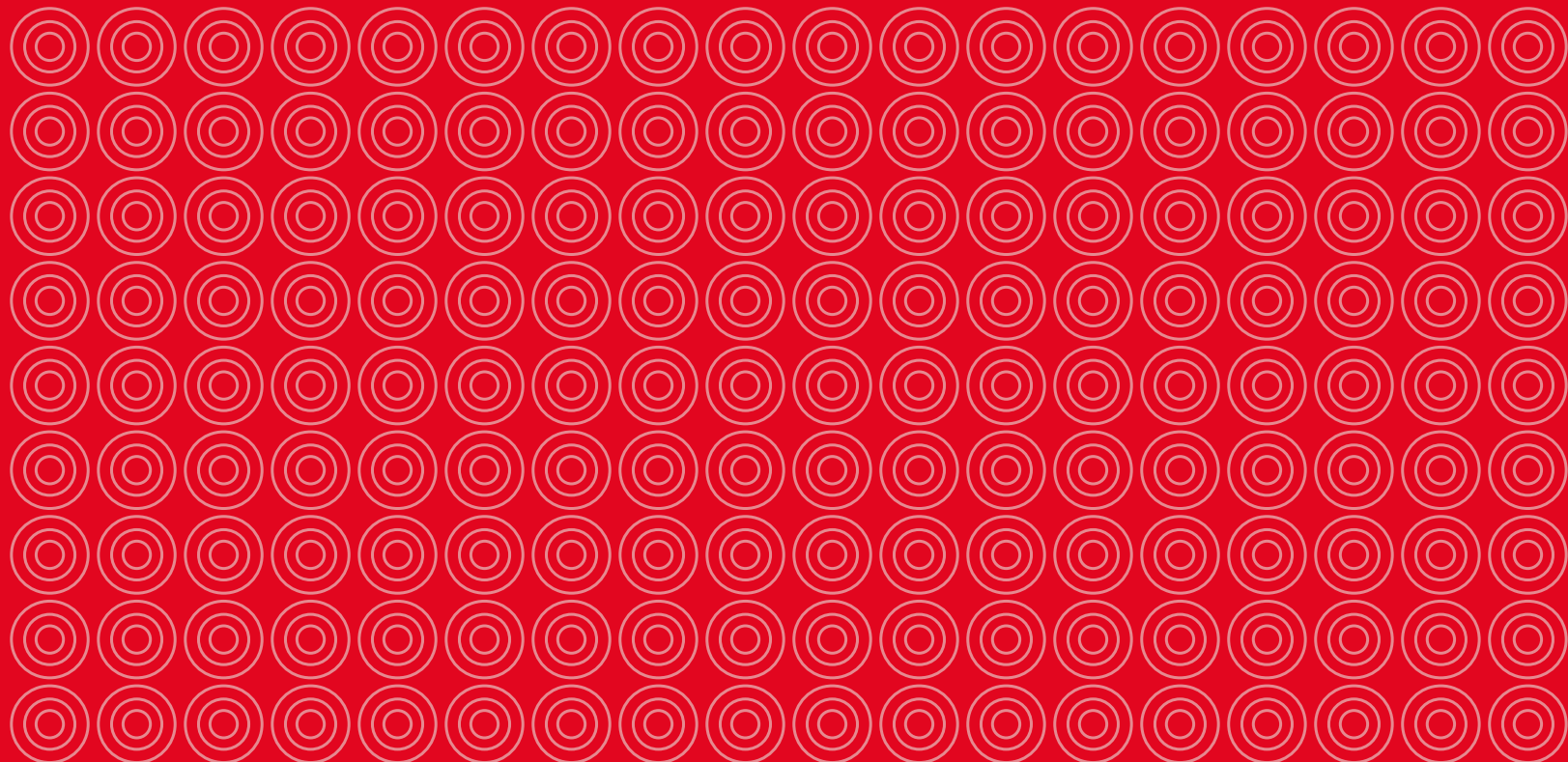
B R181 Camberra



C R183 Moscovo



A R197 Varsóvia



DISSOLTIN - Indústria de Tintas S.A.

Rua Vasco da Gama, 346
Zona Industrial da Fontanheira
Apartado 1094
3701-908 Arrifana, Sta. M^a Feira

Telf. +351 256 812 184

Fax. +351 256 812 188

Email. geral@dissoltin.pt



www.dissoltin.pt

